



VANDAL PROOF

SURFACE VANDALUX T8

VANDAL PROOF

SURFACE

VANDALUX T8



SPECIFICATIONS :

Mounting	: Ceiling mounted
Lamp type	: T8
Lamp holder	: G13
Control gear type	: HF Electronic
Voltage rating/ freq.	: 220-240V / 50-60 Hz
Power factor	: >0.95
Degree of protection	: IP 54/55
Internal wiring	: 0.5 mm sq. solid copper wire, PVC 105 deg C
Cable entry	: 16mm dia. hole on bottom of the housing
Cable connection	: Terminal block, 3-pole, screw type with grounding
Conformity	: IEC 60598 / SASO 1318
Light controller	: 6 mm clear polycarbonate diffuser

DESCRIPTIONS : VANDALUX T8 is a ceiling mounted luminaire of 1.0 mm G.I. housing finished with 3-stages pretreatment electrostatic powder coating. The 6mm PC cover offers maximum impact resistance up to IK10. It offer high IP protection for wet/dusty areas. The aluminum optic is used with purity higher than 99% and reflectance higher than 80%. Energy efficiency is obtained using an electronic ballast with PF higher than 0.95.

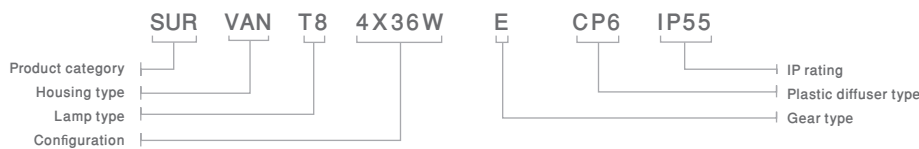
APPLICATIONS : Prisons, security centers, psychiatric hospital and other similar applications

CODE	L	W	H	CODE	L	W	H
SUR-VAN-T8-2X18WE-F/CP6 (IP54/55)	648	330	100	SUR-VAN-T8-2X36WE-F/CP6 (IP54/55)	1258	330	100
SUR-VAN-T8-3X18WE-F/CP6 (IP54/55)	648	600	100	SUR-VAN-T8-3X36WE-F/CP6 (IP54/55)	1258	600	100
SUR-VAN-T8-4X18WE-F/CP6 (IP54/55)	648	600	100	SUR-VAN-T8-4X36WE-F/CP6 (IP54/55)	1258	600	100

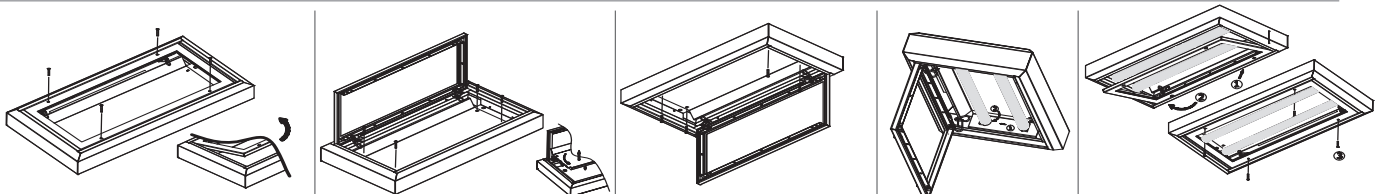
- OPTIONS:**
- Gear (DIM) [DALI]
 - Emergency Kit (EM1.5)
 - Aluminium [ALU]
 - Protection grid



Ordering Example



Mounting System



Head office

Malaz - Salahidin Road
P.O Box 1246 Riyadh 11431

Tel : +966 11 477 77 00
Fax: +966 11 478 94 69

Western Region Office

Tahliya Street
P.O Box 20798 Jeddah 21465

Tel : +966 12 6650888
Fax: +966 12 6633413

Eastern Region Office

King Abdulaziz Street
P.O Box 8492 Dammam 31482

Tel : +966 13 8336509
Fax: +966 13 8329065

ContactUs@noortek.com



www.noortek.com