



SURFACE MOUNTED

SURFLUX WRAP AROUND T8/T5

SURFACE MOUNTED

SURFLUX WRAP AROUND T8/T5



SPECIFICATIONS :

| | |
|-----------------------|--|
| Mounting | : Ceiling mounted |
| Lamp type | : T8/T5 |
| Lamp holder | : G13/G5 |
| Control gear type | : Electronic |
| Voltage rating/ freq. | : 220-240V / 50-60 Hz |
| Power factor | : >0.95 |
| Degree of protection | : IP 40/44 |
| Internal wiring | : 0.5 mm sq. solid copper wire, PVC 105 deg C |
| Cable entry | : 16mm dia. hole on bottom of the housing |
| Cable connection | : Terminal block, 3-pole, screw type with grounding |
| Conformity | : IEC 60598 / SASO 1318 |
| Light controller | : Prismatic diffuser (CP) |

DESCRIPTIONS : SURFLUX WRAP AROUND T5/T8 is a ceiling mounted luminaire of 0.6 mm steel housing finished with 3-stages pretreatment electro-static powder coating. Plastic diffuser material is PMMA. High ingress protection degree (IP40 / 43) is available to be used in wet areas. Energy efficiency is obtained using electronic ballast with PF higher than 0.95.

APPLICATIONS : Corridors and staircases.

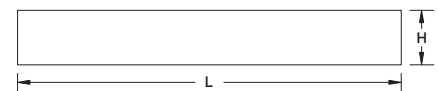
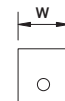
| CODE | L | W | H |
|---------------------------|------|-----|----|
| WRR-T8-1X18WE-F/CP [IP40] | 625 | 100 | 90 |
| WRR-T8-2X18WE-F/CP [IP40] | 625 | 150 | 70 |
| WRR-T8-1X36WE-F/CP [IP40] | 1235 | 100 | 90 |
| WRR-T8-2X36WE-F/CP [IP40] | 1235 | 150 | 70 |

| CODE | L | W | H |
|---------------------------|------|-----|----|
| WRR-T5-1X14WE-F/CP [IP40] | 625 | 100 | 90 |
| WRR-T5-2X14WE-F/CP [IP40] | 625 | 150 | 70 |
| WRR-T5-1X28WE-F/CP [IP44] | 1235 | 100 | 90 |
| WRR-T5-2X28WE-F/CP [IP44] | 1235 | 150 | 70 |

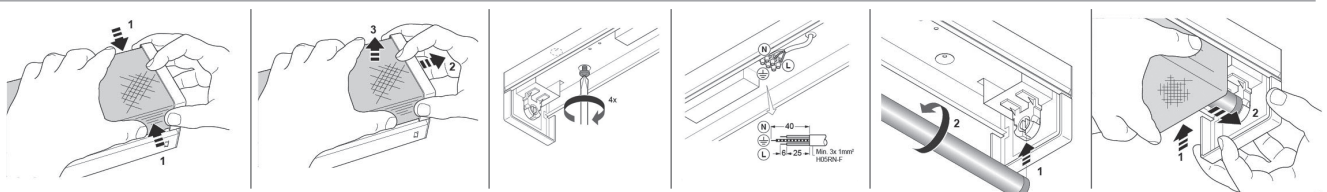
OPTIONS:
 - Gear (DIM) [DALI]
 - Emergency Kit (EM1.5) [EM3]



Ordering Example



Mounting System



Head office

Malaz - Salahidin Road
P.O Box 1246 Riyadh 11431

Tel : +966 11 477 77 00
Fax: +966 11 478 94 69

Western Region Office

Tahliya Street
P.O Box 20798 Jeddah 21465

Tel : +966 12 6650888
Fax: +966 12 6633413

Eastern Region Office

King Abdulaziz Street
P.O Box 8492 Dammam 31482

Tel : +966 13 8336509
Fax: +966 13 8329065

ContactUs@noortek.com



www.noortek.com