



# **WATERPROOF**

AQUALUX T8 GRP IP66

# WATERPROOF

AQUALUX T8 GRP IP66



## SPECIFICATIONS :

Mounting	: Ceiling /Wall mounted
Lamp type	: T8
Lamp holder	: G13
Control gear type	: Electronic
Voltage Rating/ Freq.	: 220-240V / 50-60 Hz
Power factor	: >0.95
Degree of protection	: IP 66
Internal Wiring	: 0.5 mm sq. solid copper wire, PVC 105 deg C
Cable entry	: waterproof cable gland at the end of the housing
Cable connection	: Terminal block, 3-pole, screw type with grounding
Conformity	: IEC 60598 / SASO 1318
Light controller	: PC

**DESCRIPTIONS :** AQUALUX T8 is a surface mounted luminaire that offers high ingress protection against dust and powerful jetting water. The housing is made of glass fiber reinforced plastic (GRP) while the diffuser is made of PC material. High LOR reaches 69%. Energy efficiency is obtained using an electronic ballast with PF higher than 0.95.

**APPLICATIONS :** Parking, electrical rooms and mechanical rooms, utilities areas and industrial applications.

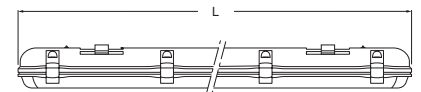
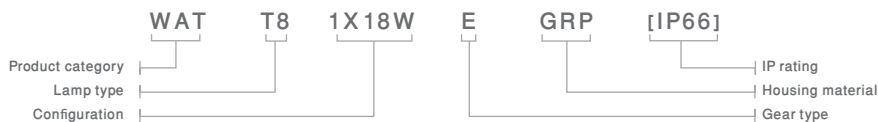
CODE	L	W	H	CODE	L	W	H
WAT-T8-1X18WE/GRP [IP66]	671	104	105	WAT-T8-1X36WE/GRP [IP66]	1270	104	105
WAT-T8-2X18WE/GRP [IP66]	671	164	105	WAT-T8-2X36WE/GRP [IP66]	1270	164	105

### OPTIONS:

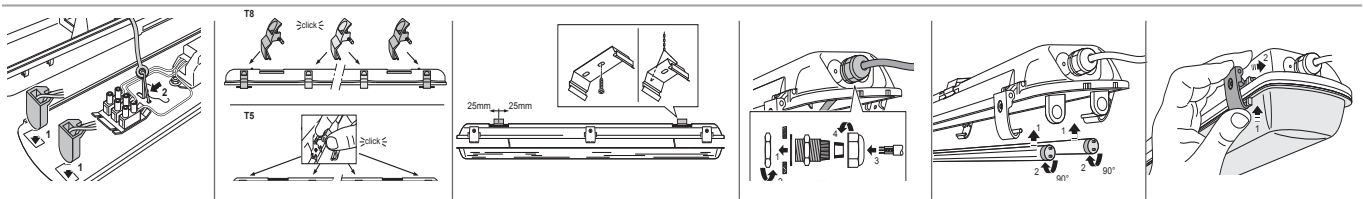
- Gear [DIM]
- Emergency Kit [EM1.5] [EM3]
- Reflector [ASSY]
- Trim Color [WH] [BR] [CR] [AU] [NI] [SI]



### Ordering Example



### Mounting System



# WATERPROOF

AQUALUX T8 GRP IP66



## SPECIFICATIONS :

Mounting	: Ceiling / Wall Mounted
Lamp type	: T8
Lamp holder	: G13
Control gear type	: Electronic
Voltage Rating/ Freq.	: 220-240V / 50-60 Hz
Power factor	: >0.95
Degree of protection	: IP 66
Internal Wiring	: 0.5 mm sq. solid copper wire, PVC 105 deg C
Cable entry	: waterproof cable gland at the end of the housing
Cable connection	: Terminal block, 3-pole, screw type with grounding
Conformity	: IEC 60598 / SASO 1318
Light controller	: PC

**DESCRIPTIONS :** AQUALUX T8 is a surface mounted luminaire that offers high ingress protection against dust and powerful jetting water. The housing is made of glass fiber reinforced plastic (GRP) while the diffuser is made of PC material. High LOR reaches 69%. Energy efficiency is obtained using an electronic ballast with PF higher than 0.95.

**APPLICATIONS :** Parking, electrical rooms and mechanical rooms, utilities areas and industrial applications.

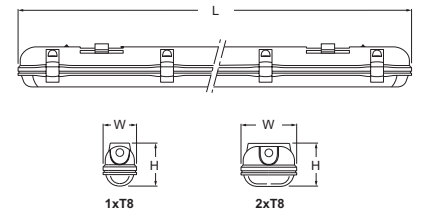
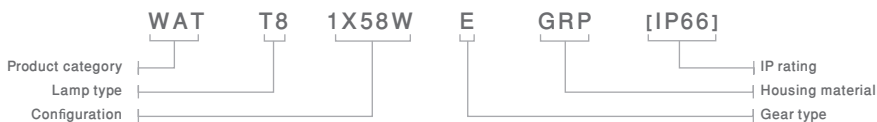
CODE	L	W	H
WAT-T8-1X58WE/GRP [IP66]	1570	104	105
WAT-T8-2X58WE/GRP [IP66]	1570	164	105

### OPTIONS:

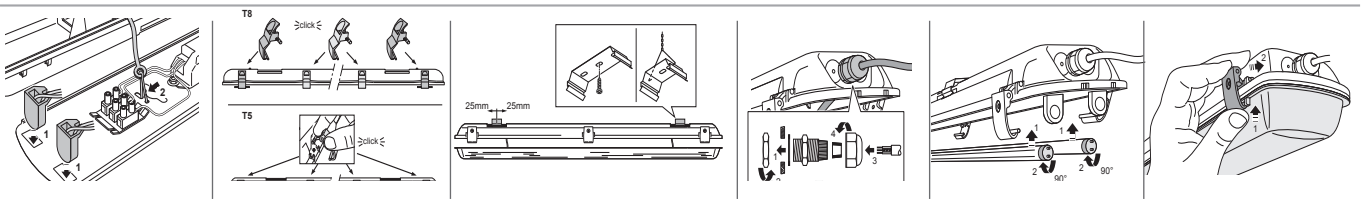
- Gear (DIM)
- Emergency Kit (EM1.5) (EM3)
- Reflector (ASSY)
- Trim Color (WH) (BR) (CR) (AU) (NI) (SI)



### Ordering Example



### Mounting System



### **Head office**

Malaz - Salahidin Road  
P.O Box 1246 Riyadh 11431

Tel : +966 11 477 77 00  
Fax: +966 11 478 94 69

### **Western Region Office**

Tahliya Street  
P.O Box 20798 Jeddah 21465

Tel : +966 12 6650888  
Fax: +966 12 6633413

### **Eastern Region Office**

King Abdulaziz Street  
P.O Box 8492 Dammam 31482

Tel : +966 13 8336509  
Fax: +966 13 8329065

ContactUs@noortek.com



**www.noortek.com**