



RECESSED

COVERLUX T8 IP40/44

RECESSED

COVERLUX T8 IP40/44



SPECIFICATIONS :

Mounting	: Ceiling recessed
Lamp type	: T8
Lamp holder	: G13
Control gear type	: Electronic
Voltage rating/ freq.	: 220-240V / 50-60 Hz
Control gear type	: Electronic
Power factor	: >0.95
Degree of protection	: IP 40 / IP 44
Internal wiring	: 0.5 mm sq. solid copper wire, PVC 105 deg C
Cable entry	: 16mm dia. hole on bottom of the housing
Cable connection	: Terminal block, 3-pole, screw type with grounding
Conformity	: IEC 60598 / SASO 1318
Light controller	: CP / CD

DESCRIPTIONS : COVERLUX T8 is a recessed luminaire of 0.6 mm steel housing finished with 3-stages pretreatment electrostatic powder coating. Plastic diffuser material is PMMA. LOR reaches up to 58%. DIAL certified photometry. High ingress protection degree (IP44) is available for wet areas. Energy efficiency is obtained using electronic ballast with PF higher than 0.95.

APPLICATIONS : Hospitals, corridors and waiting areas.

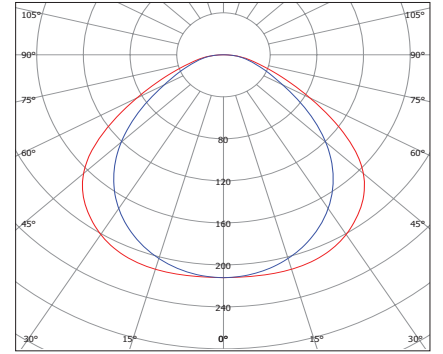


RECESSED

COVERLUX T8 IP40/44

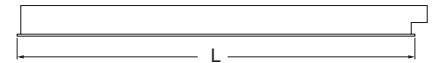
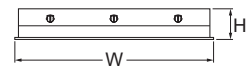
Glare Evaluation According to UGR

ρ Ceiling	70	70	50	50	30	70	70	50	50	30	
ρ Walls	50	30	50	30	30	50	30	50	30	30	
ρ Floor	20	20	20	20	20	20	20	20	20	20	
Room Size X Y	Viewing direction at right angles to lamp axis					Viewing direction parallel to lamp axis					
2H	2H	17.2	18.5	17.5	18.7	18.9	15.1	16.3	15.3	16.5	16.8
	3H	18.2	19.4	18.6	19.6	19.9	16.1	17.2	16.4	17.5	17.7
	4H	18.6	19.7	18.9	19.9	20.2	16.6	17.6	16.9	17.9	18.2
	6H	18.9	19.9	19.3	20.2	20.5	17.0	18.0	17.4	18.3	18.6
	8H	19.0	20.0	19.4	20.3	20.6	17.3	18.2	17.6	18.5	18.8
	12H	19.2	20.1	19.5	20.4	20.7	17.4	18.3	17.8	18.7	19.0
4H	2H	17.4	18.5	17.7	18.7	19.0	15.5	16.6	15.9	16.9	17.2
	3H	18.6	19.5	19.0	19.8	20.2	16.8	17.7	17.2	18.0	18.4
	4H	19.1	19.9	19.5	20.3	20.6	17.4	18.2	17.8	18.6	18.9
	6H	19.6	20.3	20.0	20.6	21.0	18.1	18.8	18.5	19.1	19.5
	8H	19.8	20.4	20.2	20.8	21.2	18.4	19.0	18.8	19.4	19.8
	12H	20.0	20.6	20.4	21.0	21.4	18.6	19.2	19.1	19.6	20.1
8H	4H	19.3	19.9	19.7	20.3	20.7	17.7	18.4	18.2	18.8	19.2
	6H	19.9	20.4	20.3	20.8	21.3	18.5	19.1	19.0	19.5	20.0
	8H	20.2	20.7	20.7	21.1	21.6	19.0	19.4	19.4	19.9	20.4
	12H	20.5	20.9	21.0	21.4	21.9	19.4	19.8	19.8	20.2	20.7
12H	4H	19.3	19.8	19.7	20.3	20.7	17.8	18.4	18.2	18.8	19.2
	6H	19.9	20.4	20.4	20.8	21.3	18.7	19.1	19.1	19.6	20.0
	8H	20.3	20.7	20.8	21.2	21.7	19.1	19.5	19.6	20.0	20.5
Variation of the observer position for the luminaire distances S											
S = 1.0H	-0.1 / -0.2					-0.2 / -0.2					
S = 1.5H	-0.5 / -0.6					-0.5 / -0.7					
S = 2.0H	+1.0 / -1.2					+0.8 / -1.2					
Standard table	BK04					BK05					
Correction Summand	-5.0					-5.9					



REC-T8-4X18WE/CP
For the rest refer to page - 427

Lor-58%



Corrected Glare Indices referring to 5400lm Total Luminous Flux
The UGR values have been calculated according to CIE Publ. 117 Spacing-to-Height-Ratio = 1.00.

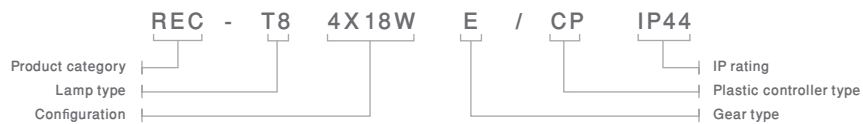
CODE	L	W	H
REC-T8-3/4X18WE/CP (IP40)	597	597	90
REC-T8-3/4X18WE/CD (IP40)	597	597	90
REC-T8-3/4X18WE/CP (IP44)	597	597	90
REC-T8-3/4X18WE/CD (IP44)	597	597	90

CODE	L	W	H
REC-T8-2X18WE/CP (IP40)	597	297	90
REC-T8-2X18WE/CD (IP40)	597	297	90
REC-T8-2X18WE/CP (IP44)	597	297	90
REC-T8-2X18WE/CD (IP44)	597	297	90

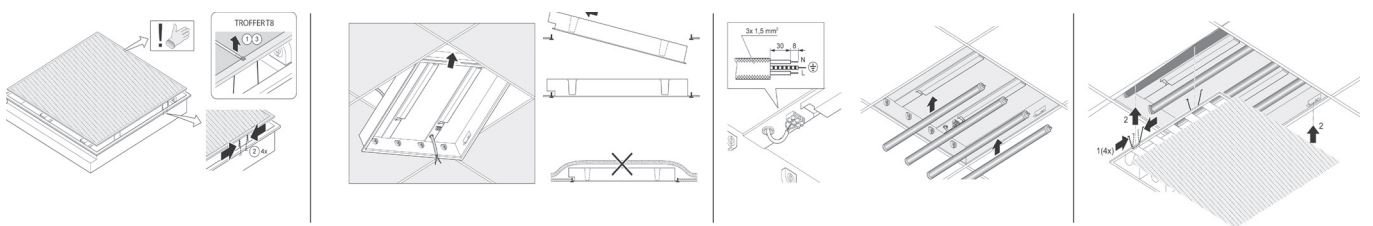
- OPTIONS:**
- Gear (DIM) [DALI]
 - Emergency Kit (EM1.5) [EM3]



Ordering Example

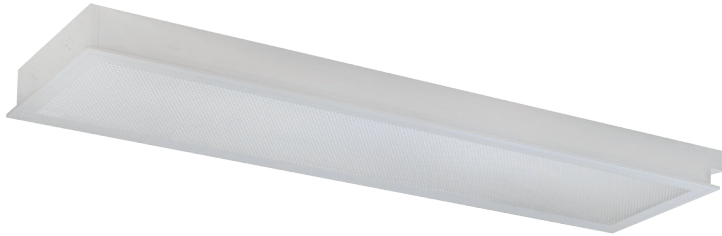


Mounting System



RECESSED

COVERLUX T8 IP40/44



SPECIFICATIONS :

Mounting	: Ceiling recessed
Lamp type	: T8
Lamp holder	: G13
Control gear type	: Electronic
Voltage rating/ freq.	: 220-240V / 50-60 Hz
Power factor	: >0.95
Degree of protection	: IP 40 / IP 44
Internal wiring	: 0.5 mm sq. solid copper wire, PVC 105 deg C
Cable entry	: 16mm dia. hole on bottom of the housing
Cable connection	: Terminal block, 3-pole, screw type with grounding
Conformity	: IEC 60598 / SASO 1318
Light controller	: CP /CD

DESCRIPTIONS : OFFILUX T8 is a recessed luminaire of 0.6 mm steel housing finished with 3-stages pretreatment electrostatic powder coating. Plastic diffuser material is PMMA. LOR reaches up to 58%. DIAL certified photometry. High ingress protection degree (IP44) is available for wet areas. Energy efficiency is obtained using electronic ballast with PF higher than 0.95.

APPLICATIONS : Hospitals, corridors and waiting areas.



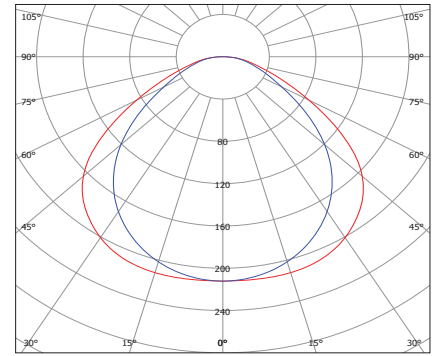
RECESSED

COVERLUX T8 IP40/44

Glare Evaluation According to UGR

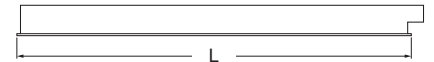
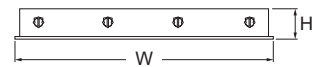
Room Size		Viewing direction at right angles to lamp axis					Viewing direction parallel to lamp axis				
X	Y										
ρ Ceiling		70	70	50	50	30	70	70	50	50	30
ρ Walls		50	30	50	30	30	50	30	50	30	30
ρ Floor		20	20	20	20	20	20	20	20	20	20
2H	2H	17.7	19.0	18.0	19.2	19.4	15.5	16.8	15.8	17.0	17.3
	3H	18.7	19.9	19.0	20.1	20.4	16.6	17.7	16.9	18.0	18.2
	4H	19.1	20.2	19.4	20.4	20.7	17.0	18.1	17.4	18.4	18.7
	6H	19.4	20.4	19.7	20.7	21.0	17.5	18.5	17.9	18.8	19.1
	8H	19.5	20.5	19.9	20.8	21.1	17.7	18.7	18.1	19.0	19.3
	12H	19.6	20.6	20.0	20.9	21.2	17.9	18.8	18.3	19.2	19.5
4H	2H	17.9	18.9	18.2	19.2	19.5	16.0	17.1	16.4	17.4	17.7
	3H	19.1	20.0	19.5	20.3	20.6	17.3	18.2	17.7	18.5	18.8
	4H	19.6	20.4	20.0	20.7	21.1	17.9	18.7	18.3	19.1	19.4
	6H	20.1	20.8	20.5	21.1	21.5	18.6	19.3	19.0	19.6	20.0
	8H	20.3	20.9	20.7	21.3	21.7	18.9	19.5	19.3	19.9	20.3
	12H	20.5	21.0	20.9	21.5	21.9	19.1	19.7	19.6	20.1	20.5
8H	4H	19.7	20.4	20.2	20.8	21.2	18.2	18.9	18.6	19.2	19.7
	6H	20.4	20.9	20.8	21.3	21.8	19.0	19.6	19.5	20.0	20.4
	8H	20.7	21.1	21.2	21.6	22.1	19.5	19.9	19.9	20.4	20.8
	12H	21.0	21.4	21.5	21.8	22.3	19.8	20.2	20.3	20.7	21.2
12H	4H	19.8	20.3	20.2	20.7	21.2	18.3	18.8	18.7	19.3	19.7
	6H	20.4	20.9	20.9	21.3	21.8	19.1	19.6	19.6	20.1	20.5
	8H	20.8	21.2	21.3	21.7	22.2	19.6	20.0	20.1	20.5	21.0

Variation of the observer position for the luminaire distances S			
S = 1.0H		+0.1 / -0.2	-0.2 / -0.2
S = 1.5H		+0.5 / -0.6	-0.5 / -0.7
S = 2.0H		+1.0 / -1.2	-0.8 / -1.2
Standard table		BK04	BK05
Correction Summand		-7.7	-8.6



REC-T8-4X36WE/CP
For the rest refer to page - 427

LoR-5.8%



Corrected Glare Indices referring to 13400lm Total Luminous Flux

The UGR values have been calculated according to CIE Publ. 117 Spacing-to-Height-Ratio = 1.00.

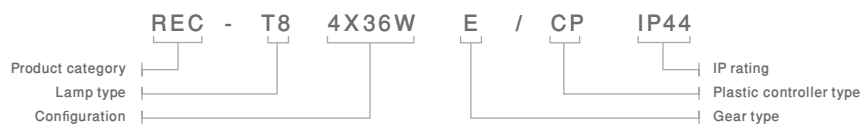
CODE	L	W	H
REC-T8-3/4X36WE/CP (IP40)	1197	597	90
REC-T8-3/4X36WE/CD (IP40)	1197	597	90
REC-T8-3/4X36WE/CP (IP44)	1197	597	90
REC-T8-3/4X36WE/CD (IP44)	1197	597	90

CODE	L	W	H
REC-T8-2X36WE/CP (IP40)	1197	297	90
REC-T8-2X36WE/CD (IP40)	1197	297	90
REC-T8-2X36WE/CP (IP44)	1197	297	90
REC-T8-2X36WE/CD (IP44)	1197	297	90

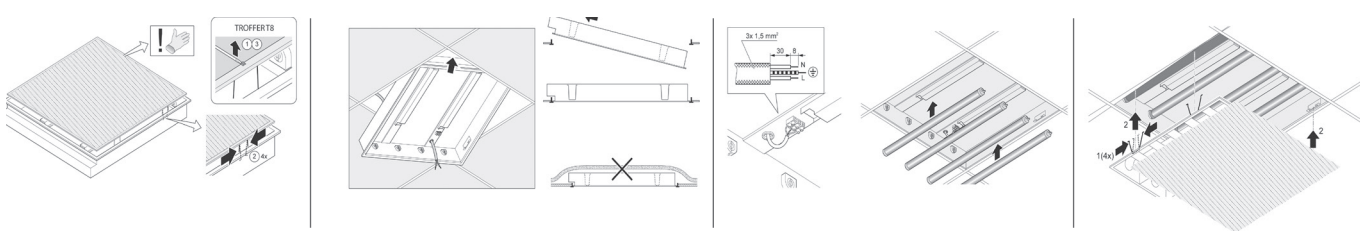
- OPTIONS:**
- Gear (DIM) [DALI]
 - Emergency Kit (EM1.5) [EM3]



Ordering Example



Mounting System



Head office

Malaz - Salahidin Road
P.O Box 1246 Riyadh 11431

Tel : +966 11 477 77 00
Fax: +966 11 478 94 69

Western Region Office

Tahliya Street
P.O Box 20798 Jeddah 21465

Tel : +966 12 6650888
Fax: +966 12 6633413

Eastern Region Office

King Abdulaziz Street
P.O Box 8492 Dammam 31482

Tel : +966 13 8336509
Fax: +966 13 8329065

ContactUs@noortek.com



www.noortek.com