



RECESSED

OFFILUX T5

RECESSED

OFFILUX T5



SPECIFICATIONS :

Mounting	: Ceiling recessed
Lamp type	: T5
Lamp holder	: G5
Control gear type	: Electronic
Voltage rating/ freq.	: 220-240V / 50-60 Hz
Power factor	: >0.95
Degree of protection	: IP 20
Internal wiring	: 0.5 mm sq. solid copper wire, PVC 105 deg C
Cable entry	: 16mm dia. hole on bottom of the housing
Cable connection	: Terminal block, 3-pole, screw type with grounding
Conformity	: IEC 60598 / SASO 1318
Light controller	: SP-S/DP-S/SP-M/DP-M

DESCRIPTIONS : OFFILUX T5 is a recessed luminaire of 0.6 mm steel housing finished with 3-stages pretreatment electrostatic powder coating. The aluminum optic is used with purity higher than 99% and reflectance higher than 70% for LOR reaches up to 70%. DIAL certified photometry. Energy efficiency is obtained using an electronic ballast with PF higher than 0.95.

APPLICATIONS : Offices, meeting rooms and apartments.

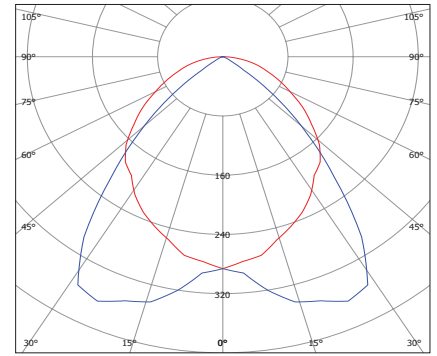


RECESSED

OFFILUX T5

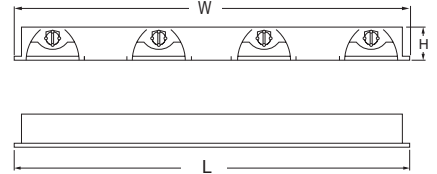
Glare Evaluation According to UGR

Room Size		Viewing direction at right angles to lamp axis					Viewing direction parallel to lamp axis				
X	Y										
ρ Ceiling		70	70	50	50	30	70	70	50	50	30
ρ Walls		50	30	50	30	30	50	30	50	30	30
ρ Floor		20	20	20	20	20	20	20	20	20	20
2H	2H	16.1	17.2	16.3	17.4	17.6	5.9	7.0	6.1	7.2	7.4
	3H	17.4	18.4	17.7	18.7	18.9	5.9	6.8	6.2	7.1	7.3
	4H	17.9	18.9	18.3	19.1	19.4	5.8	6.7	6.1	7.0	7.3
	6H	18.3	19.2	18.7	19.5	19.8	5.7	6.6	6.1	6.9	7.2
	8H	18.4	19.2	18.8	19.5	19.9	5.7	6.5	6.0	6.8	7.1
	12H	18.5	19.2	18.8	19.6	19.9	5.6	6.4	6.0	6.7	7.1
4H	2H	15.9	16.9	16.3	17.1	17.4	7.2	8.1	7.5	8.4	8.7
	3H	17.5	18.2	17.8	18.6	18.9	7.2	8.0	7.6	8.3	8.7
	4H	18.1	18.8	18.5	19.1	19.5	7.2	7.9	7.6	8.2	8.6
	6H	18.6	19.2	19.0	19.6	20.0	7.2	7.7	7.6	8.1	8.5
	8H	18.8	19.3	19.2	19.7	20.1	7.1	7.7	7.5	8.0	8.5
	12H	18.9	19.4	19.3	19.8	20.2	7.1	7.6	7.5	8.0	8.4
8H	4H	18.0	18.6	18.4	18.9	19.4	8.1	8.6	8.5	9.0	9.4
	6H	18.6	19.0	19.0	19.4	19.9	8.1	8.5	8.5	8.9	9.4
	8H	18.8	19.2	19.3	19.6	20.1	8.0	8.4	8.5	8.9	9.3
	12H	18.9	19.2	19.4	19.7	20.2	8.0	8.3	8.5	8.8	9.3
12H	4H	18.0	18.5	18.4	18.9	19.3	8.3	8.8	8.7	9.2	9.6
	6H	18.5	18.9	19.0	19.4	19.8	8.3	8.7	8.7	9.1	9.6
	8H	18.7	19.1	19.2	19.5	20.0	8.2	8.6	8.7	9.0	9.5



REC-T5-4X14WE/SP-S
For the rest refer to page - 427
LOR-70%

Variation of the observer position for the luminaire distances S			
S = 1.0H		+0.3 / -0.4	+1.3 / -3.5
S = 1.5H		+0.7 / -0.9	+2.7 / -7.0
S = 2.0H		+1.1 / -1.3	+4.3 / -9.5
Standard table	BK04		BK01
Correction Summand	-5.2		-11.6



Corrected Glare Indices referring to 4800lm Total Luminous Flux
The UGR values have been calculated according to CIE Publ. 117 Spacing-to-Height-Ratio = 1.00.

CODE	L	W	H
REC-T5-3/4X14WE/SP-S	597	597	51
REC-T5-3/4X14WE/DP-S	597	597	51
REC-T5-3/4X14WE/SP-M	597	597	51
REC-T5-3/4X14WE/DP-M	597	597	51

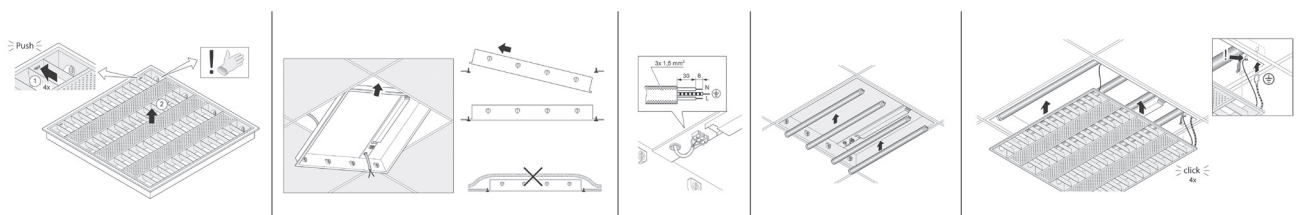
- OPTIONS:**
 - Gear (DIM) [DALI]
 - Emergency Kit (EM1.5) [EM3]



Ordering Example



Mounting System



RECESSED

OFFILUX T5



SPECIFICATIONS :

Mounting	: Ceiling recessed
Lamp type	: T5
Lamp holder	: G5
Control gear type	: Electronic
Voltage rating/ freq.	: 220-240V / 50-60 Hz
Power factor	: >0.95
Degree of protection	: IP 20
Internal wiring	: 0.5 mm sq. solid copper wire, PVC 105 deg C
Cable entry	: 16mm dia. hole on bottom of the housing
Cable connection	: Terminal block, 3-pole, screw type with grounding
Conformity	: IEC 60598 / SASO 1318
Light controller	: SP-S/DP-S/SP-M/DP-M

DESCRIPTIONS : OFFILUX T5 is a recessed luminaire of 0.6 mm steel housing finished with 3-stages pretreatment electrostatic powder coating. The aluminum optic is used with purity higher than 99% and reflectance higher than 80% for LOR reaches up to 69%. DIAL certified photometry. Energy efficiency is obtained using electronic ballast with PF higher than 0.95.

APPLICATIONS : Offices, meeting rooms and apartments.

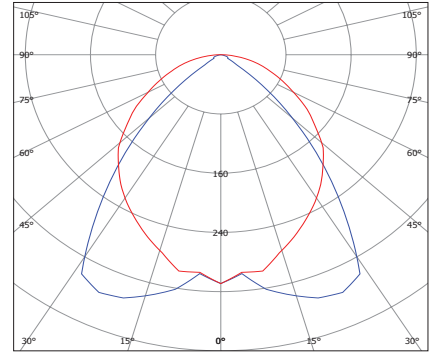


RECESSED

OFFILUX T5

Glare Evaluation According to UGR

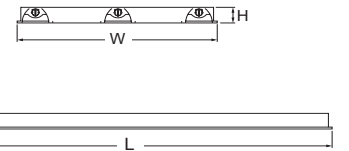
Room Size		Viewing direction at right angles to lamp axis					Viewing direction parallel to lamp axis				
X	Y										
2H	2H	15.8	16.9	16.0	17.1	17.3	4.3	5.4	4.5	5.6	5.8
	3H	17.2	18.2	17.5	18.5	18.7	5.0	5.9	5.3	6.2	6.5
	4H	17.8	18.7	18.1	19.0	19.3	5.2	6.1	5.5	6.4	6.7
	6H	18.2	19.1	18.5	19.4	19.7	5.2	6.1	5.6	6.4	6.7
	8H	18.3	19.2	18.7	19.5	19.8	5.2	6.0	5.5	6.3	6.6
	12H	18.4	19.2	18.8	19.5	19.8	5.1	5.9	5.5	6.2	6.6
4H	2H	15.6	16.5	15.9	16.8	17.1	5.8	6.7	6.1	7.0	7.3
	3H	17.2	18.0	17.6	18.3	18.7	6.5	7.3	6.9	7.6	8.0
	4H	17.9	18.6	18.3	19.0	19.3	6.9	7.5	7.2	7.9	8.2
	6H	18.5	19.1	18.9	19.5	19.9	6.9	7.5	7.3	7.8	8.2
	8H	18.7	19.3	19.1	19.6	20.0	6.8	7.4	7.3	7.8	8.2
	12H	18.8	19.3	19.3	19.7	20.2	6.8	7.3	7.3	7.7	8.1
8H	4H	17.8	18.4	18.3	18.8	19.2	7.9	8.4	8.3	8.8	9.2
	6H	18.5	18.9	18.9	19.3	19.8	7.9	8.4	8.4	8.8	9.2
	8H	18.7	19.1	19.2	19.5	20.0	7.9	8.3	8.4	8.7	9.2
	12H	18.9	19.2	19.4	19.7	20.2	7.9	8.2	8.4	8.7	9.2
12H	4H	17.8	18.3	18.3	18.7	19.1	8.1	8.6	8.6	9.0	9.4
	6H	18.4	18.8	18.9	19.3	19.7	8.2	8.6	8.7	9.0	9.5
	8H	18.7	19.0	19.2	19.5	20.0	8.2	8.5	8.7	9.0	9.5



REC-T5-3X28WE/SP-S
For the rest refer to page - 427
LOR 69%

Variation of the observer position for the luminaire distances S		
S = 1.0H	+0.3 / -0.3	+1.2 / -3.1
S = 1.5H	+0.5 / -0.8	+2.6 / -5.6
S = 2.0H	+1.0 / -1.0	+4.1 / -6.8
Standard table	BK05	BK01
Correction Summand	-6.6	-14.4

Corrected Glare Indices referring to 7800lm Total Luminous Flux
The UGR values have been calculated according to CIE Publ. 117 Spacing-to-Height-Ratio = 1.00.



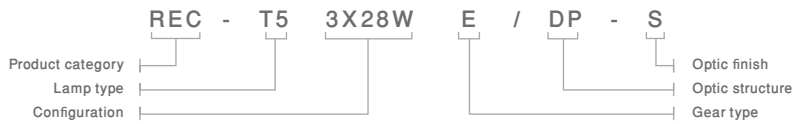
CODE	L	W	H
REC-T5-3X28WE/SP-S	1197	597	51
REC-T5-3X28WE/DP-S	1197	597	51
REC-T5-3X28WE/SP-M	1197	597	51
REC-T5-3X28WE/DP-M	1197	597	51

CODE	L	W	H
REC-T5-2X28WE/SP-S	1197	297	72
REC-T5-2X28WE/DP-S	1197	297	72
REC-T5-2X28WE/SP-M	1197	297	72
REC-T5-2X28WE/DP-M	1197	297	72

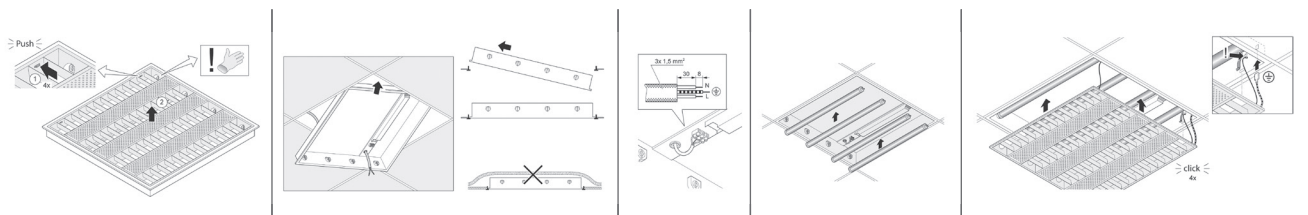
- OPTIONS:**
 - Gear (DIM) [DALI]
 - Emergency Kit (EM1.5) [EM3]



Ordering Example



Mounting System



Head office

Malaz - Salahidin Road
P.O Box 1246 Riyadh 11431

Tel : +966 11 477 77 00
Fax: +966 11 478 94 69

Western Region Office

Tahliya Street
P.O Box 20798 Jeddah 21465

Tel : +966 12 6650888
Fax: +966 12 6633413

Eastern Region Office

King Abdulaziz Street
P.O Box 8492 Dammam 31482

Tel : +966 13 8336509
Fax: +966 13 8329065

ContactUs@noortek.com



www.noortek.com