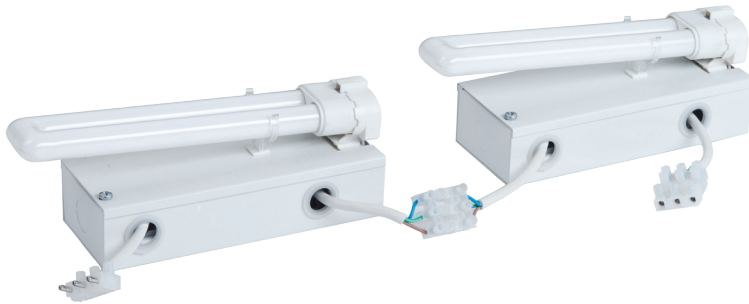


BATTENS

FLEX CFL 18W

BATTENS

FLEX CFL 18W



SPECIFICATIONS :

| | |
|-----------------------|--|
| Mounting | : Surface mounted |
| Lamp type | : CFL |
| Lamp holder | : 2G11 |
| Control gear type | : Electronic |
| Voltage Rating/ Freq. | : 220-240V / 50-60 Hz |
| Power factor | : >0.95 |
| Degree of protection | : IP 20 |
| Internal Wiring | : 0.5 mm sq. solid copper wire, PVC 105 deg C . |
| Cable entry | : 16mm diam hole at the side of the housing |
| Cable connection | : Terminal block, 3-pole, screw type with grounding |
| Conformity | : IEC 60598 / SASO 1318 |
| Optical system | : BL |

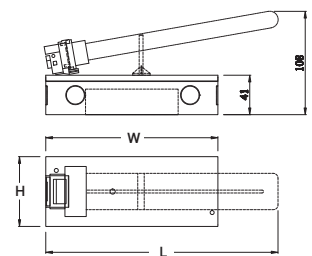
DESCRIPTIONS : Flex CFL is a surface mounted luminaire of 0.6 mm steel housing finished with 3-Stages pretreated electrostatic powder coating with/ without louver. Energy efficiency is obtained using an electronic ballast with PF higher than 0.95.

APPLICATIONS : Cove lights applications.

| CODE | L | W | H |
|--------------------------|-----|-----|----|
| BAT-CFL-1X18WE/BL [COVE] | 243 | 180 | 73 |

OPTIONS:

- Gear [DIM] [DALI]
- Emergency Kit [EM1.5] [EM3]
- Aluminium [ALU]



Ordering Example



Head office

Malaz - Salahidin Road
P.O Box 1246 Riyadh 11431

Tel : +966 11 477 77 00
Fax: +966 11 478 94 69

Western Region Office

Tahliya Street
P.O Box 20798 Jeddah 21465

Tel : +966 12 6650888
Fax: +966 12 6633413

Eastern Region Office

King Abdulaziz Street
P.O Box 8492 Dammam 31482

Tel : +966 13 8336509
Fax: +966 13 8329065

ContactUs@noortek.com



www.noortek.com