



EXIT SIGN

VANDAL WALL/CEILING

EXIT SIGN

VANDAL

WALL / CEILING



SPECIFICATIONS :

Mounting	: Surface Mounted (Wall / Ceiling)
Lamp Configuration	: 8W T5
Lamp holder	: G5
Control Gear Type	: EM Backup Kit HF Electronic Ballast
Operating Mod	: Maintain / Non Maintain
Voltage Rating/ Freq.	: 220-240V / 50-60 Hz
Degree of protection	: IP 40
Internal Wiring	: 0.5 mm sq solid copper wire PVC 105 deg C
Cable entry	: Side or rear cable entry
Cable connection	: Terminal block, 3-pole, screw type
Conformity	: IEC 60598 / SASO 1318

DESCRIPTIONS : EXITEK VANDAL is a Wall / Ceiling mounted exit/emergency light of 1.0mm G.I. housing finished with 3-stages pre-treatment electrostatic powder coating with Maintained (M) and Non-Maintained (NM) 3 hrs Emergency Kit (1.5 Hr. as option). The 6mm PC sign legend offers vandal proof protection not to mention the 1.0mm thickness housing. This type is suitable for all types of walls and ceilings.

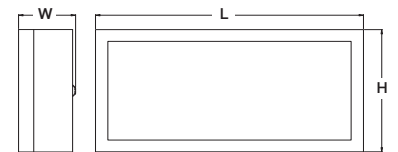
APPLICATIONS : Prisons, public areas, schools and other similar applications.

CODE	L	W	H
EXIT VANDAL [WAL/METAL] M-3hr T5-1X8W - ARABIC/ENGLISH [WH]	423	90	203
EXIT VANDAL [WAL/METAL] M-3hr T5-1X8W - ARROW UP [WH]	423	90	203
EXIT VANDAL [WAL/METAL] M-3hr T5-1X8W - ARROW DOWN [WH]	423	90	203
EXIT VANDAL [WAL/METAL] M-3hr T5-1X8W - ARROW LEFT [WH]	423	90	203
EXIT VANDAL [WAL/METAL] M-3hr T5-1X8W - ARROW RIGHT [WH]	423	90	203
EXIT VANDAL [WAL/METAL] M-3hr T5-1X8W - NO ARROW [WH]	423	90	203

CODE	L	W	H
EXIT VANDAL [CEIL/METAL] NM-3hr T5-1X8W - ARABIC/ENGLISH [WH]	423	90	203
EXIT VANDAL [CEIL/METAL] NM-3hr T5-1X8W - ARROW UP [WH]	423	90	203
EXIT VANDAL [CEIL/METAL] NM-3hr T5-1X8W - ARROW DOWN [WH]	423 <td 90	203	
EXIT VANDAL [CEIL/METAL] NM-3hr T5-1X8W - ARROW LEFT [WH]	423	90	203
EXIT VANDAL [CEIL/METAL] NM-3hr T5-1X8W - ARROW RIGHT [WH]	423	90	203
EXIT VANDAL [CEIL/METAL] NM-3hr T5-1X8W - NO ARROW [WH]	423	90	203

OPTIONS:

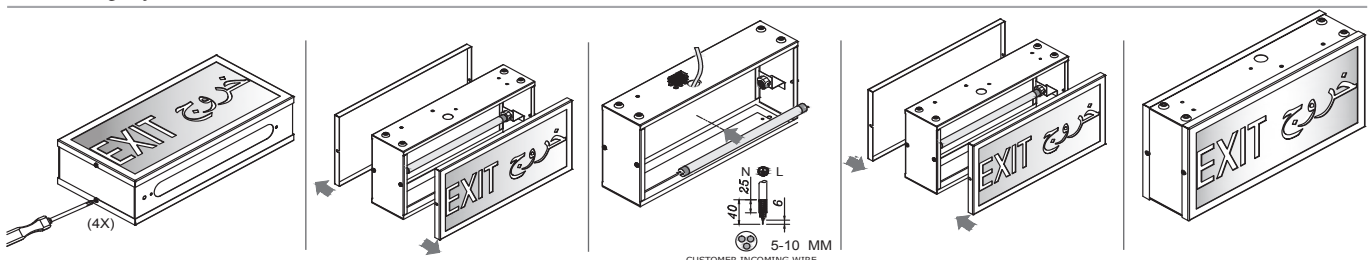
- Emergency duration for 1.5 Hrs.
- High frequency (HF) electronic control gear for central battery systems (CBS) compatibility



Ordering Example



Mounting System



Head office

Malaz - Salahidin Road
P.O Box 1246 Riyadh 11431

Tel : +966 11 477 77 00
Fax: +966 11 478 94 69

Western Region Office

Tahliya Street
P.O Box 20798 Jeddah 21465

Tel : +966 12 6650888
Fax: +966 12 6633413

Eastern Region Office

King Abdulaziz Street
P.O Box 8492 Dammam 31482

Tel : +966 13 8336509
Fax: +966 13 8329065

ContactUs@noortek.com



www.noortek.com