



DOWNLIGHTS

DOLUX 6"ROUND IP 54

DOWNLIGHTS

DOLUX 6" ROUND IP 54
WITH GLASS



SPECIFICATIONS :

Mounting	: Ceiling recessed
Lamp type	: CFL
Lamp holder	: G24q
Control gear type	: Electronic
Voltage Rating/ Freq.	: 220-240V / 50-60 Hz
Power factor	: >0.95
Degree of protection	: IP 54
Internal Wiring	: 0.5 mm sq. solid copper wire PVC 105 deg C
Cable entry	: 16mm dia. hole at end of gear box
Cable connection	: Terminal block, 3-pole, screw type with grounding2
Conformity	: IEC 60598 / SASO 1318
Light controller	: CA/CA-B/-CTG / CA/CA-B-FG

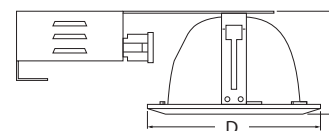
DESCRIPTIONS : DOLUX 6" Round is a recessed luminaire of 0.6 mm steel housing finished with 3-stages pretreatment electrostatic powder coating. The trim is made of die casted aluminum. The aluminum optic is used with purity higher than 99% and reflectance higher than 80%. High ingress protection degree (IP54) is available for dusty/wet areas. Energy efficiency is obtained using an electronic ballast with PF higher than 0.95.

APPLICATIONS : Hospitals, laboratories and industrial applications.

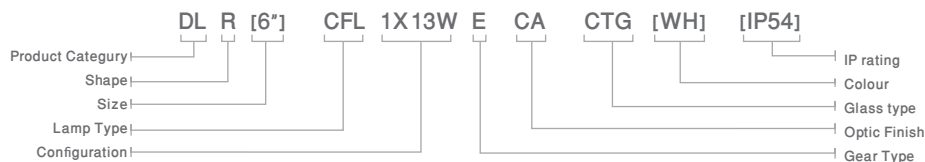
CODE	D	H	CODE	D	H
DLR [6"]-CFL-1/2X13WE-CA-CTG (WH) [IP54]	194	105	DLR [6"]-CFL-1/2X18WE-CA-CTG (WH) [IP54]	194	105
DLR [6"]-CFL-1/2X13WE-CA-B-CTG (WH) [IP54]	194	105	DLR [6"]-CFL-1/2X18WE-CA-B-CTG (WH) [IP54]	194	105
DLR [6"]-CFL-1/2X13WE-CA-FG (WH) [IP54]	194	105	DLR [6"]-CFL-1/2X18WE-CA-FG (WH) [IP54]	194	105
DLR [6"]-CFL-1/2X13WE-CA-B-FG (WH) [IP54]	194	105	DLR [6"]-CFL-1/2X18WE-CA-B-FG (WH) [IP54]	194	105

OPTIONS:

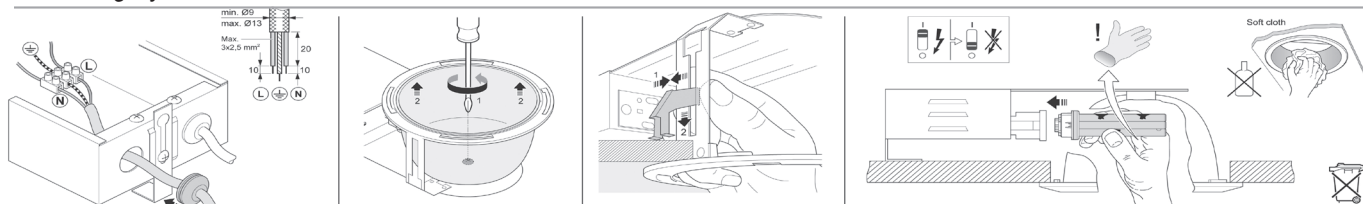
- Lamp holders (E27)
- Gear (DIM) (DALI)
- Emergency Kit (EM1.5) (EM3)
- Reflector (ASSY)
- Trim Color (WH) [GR] [AU]



Ordering Example



Mounting System



Head office

Malaz - Salahidin Road
P.O Box 1246 Riyadh 11431

Tel : +966 11 477 77 00
Fax: +966 11 478 94 69

Western Region Office

Tahliya Street
P.O Box 20798 Jeddah 21465

Tel : +966 12 6650888
Fax: +966 12 6633413

Eastern Region Office

King Abdulaziz Street
P.O Box 8492 Dammam 31482

Tel : +966 13 8336509
Fax: +966 13 8329065

ContactUs@noortek.com



www.noortek.com